



Elevation B

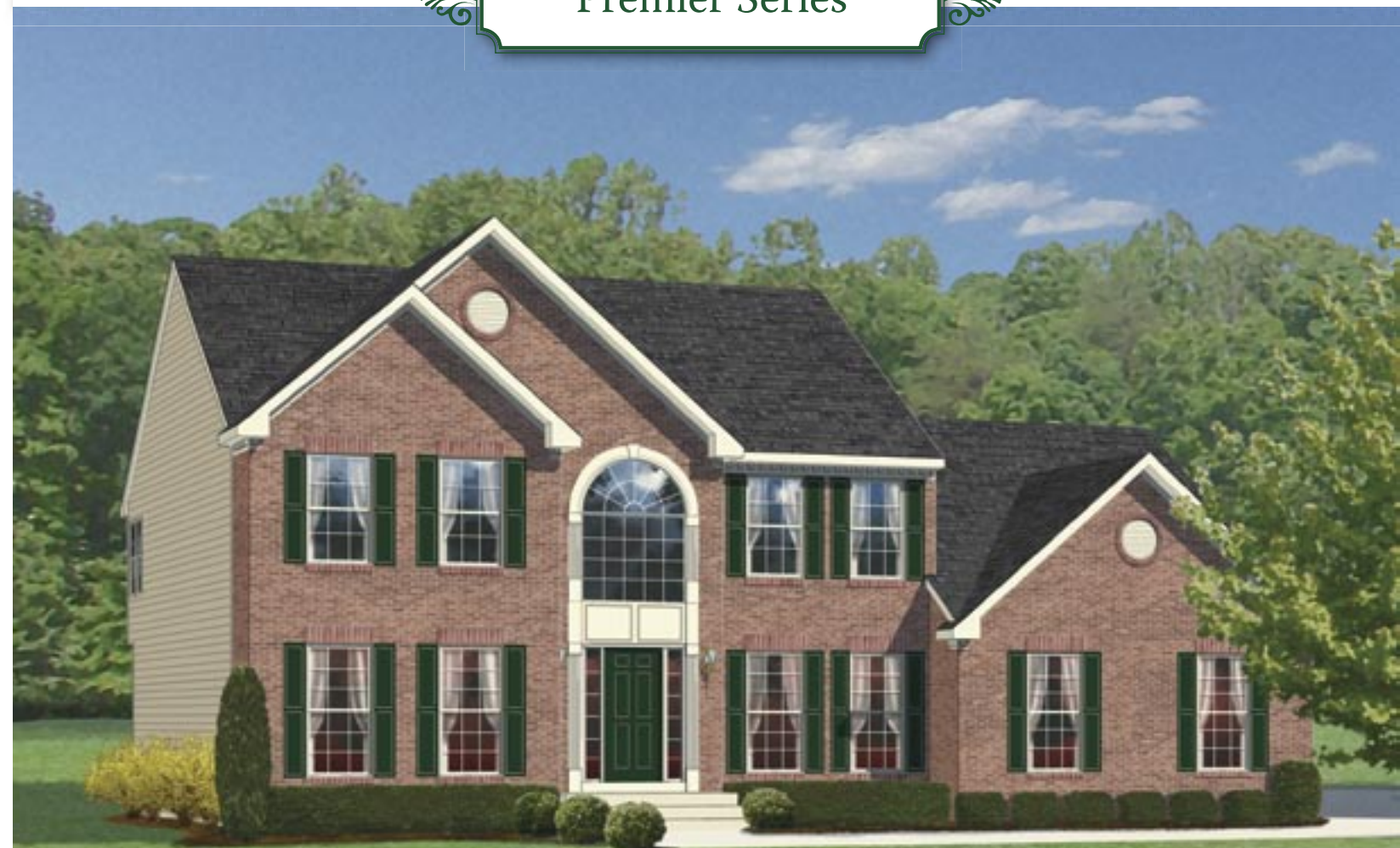


Elevation C



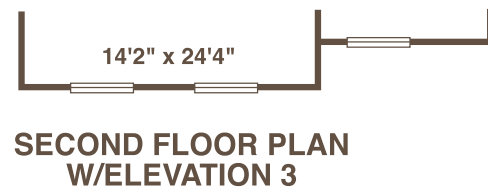
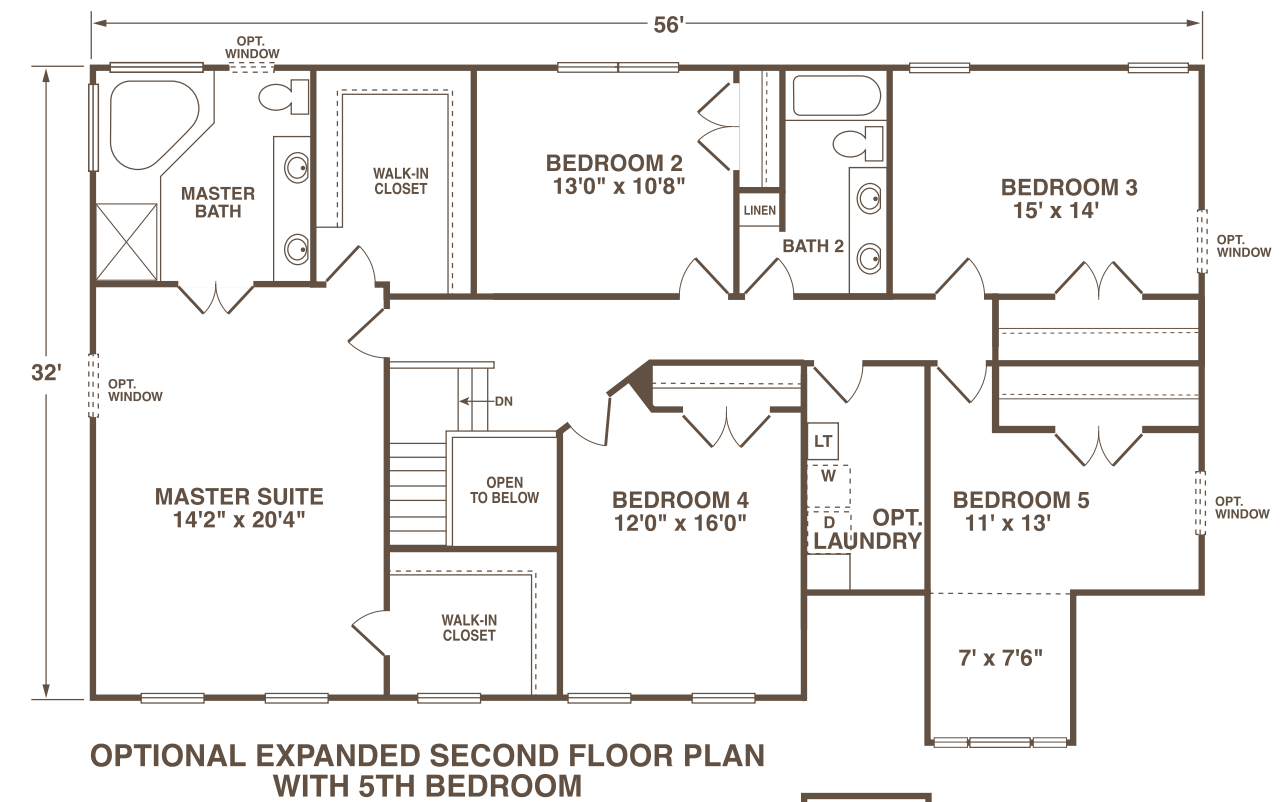
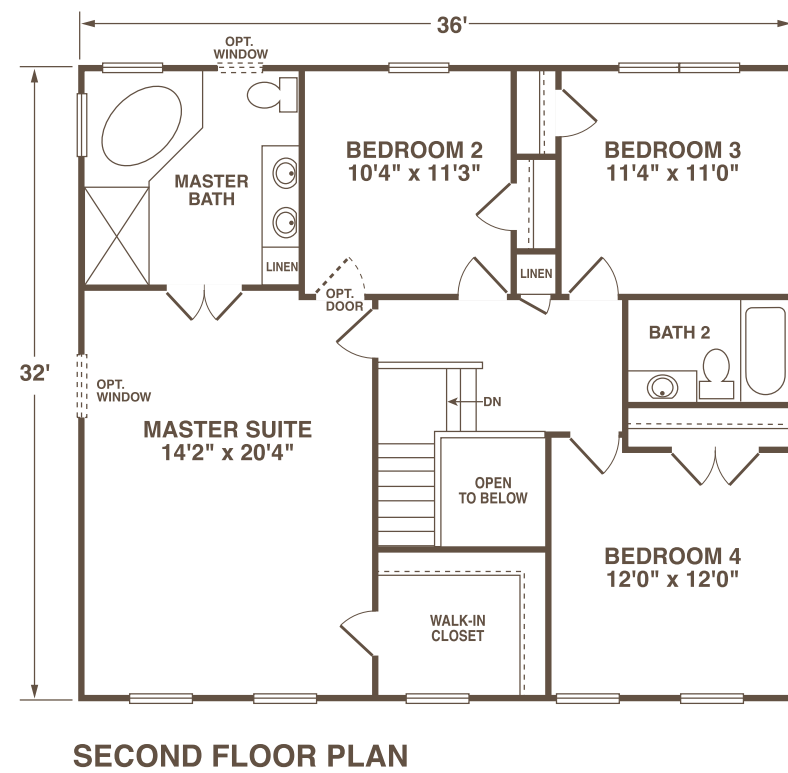
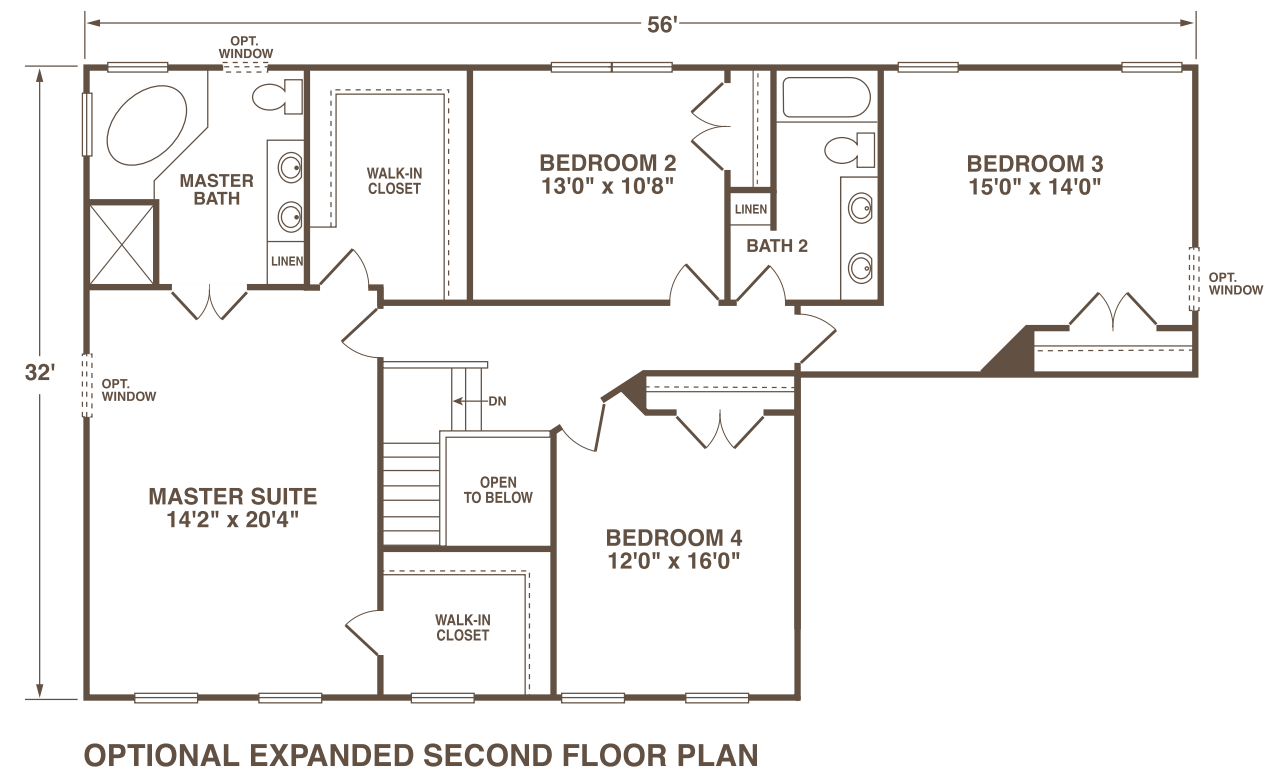
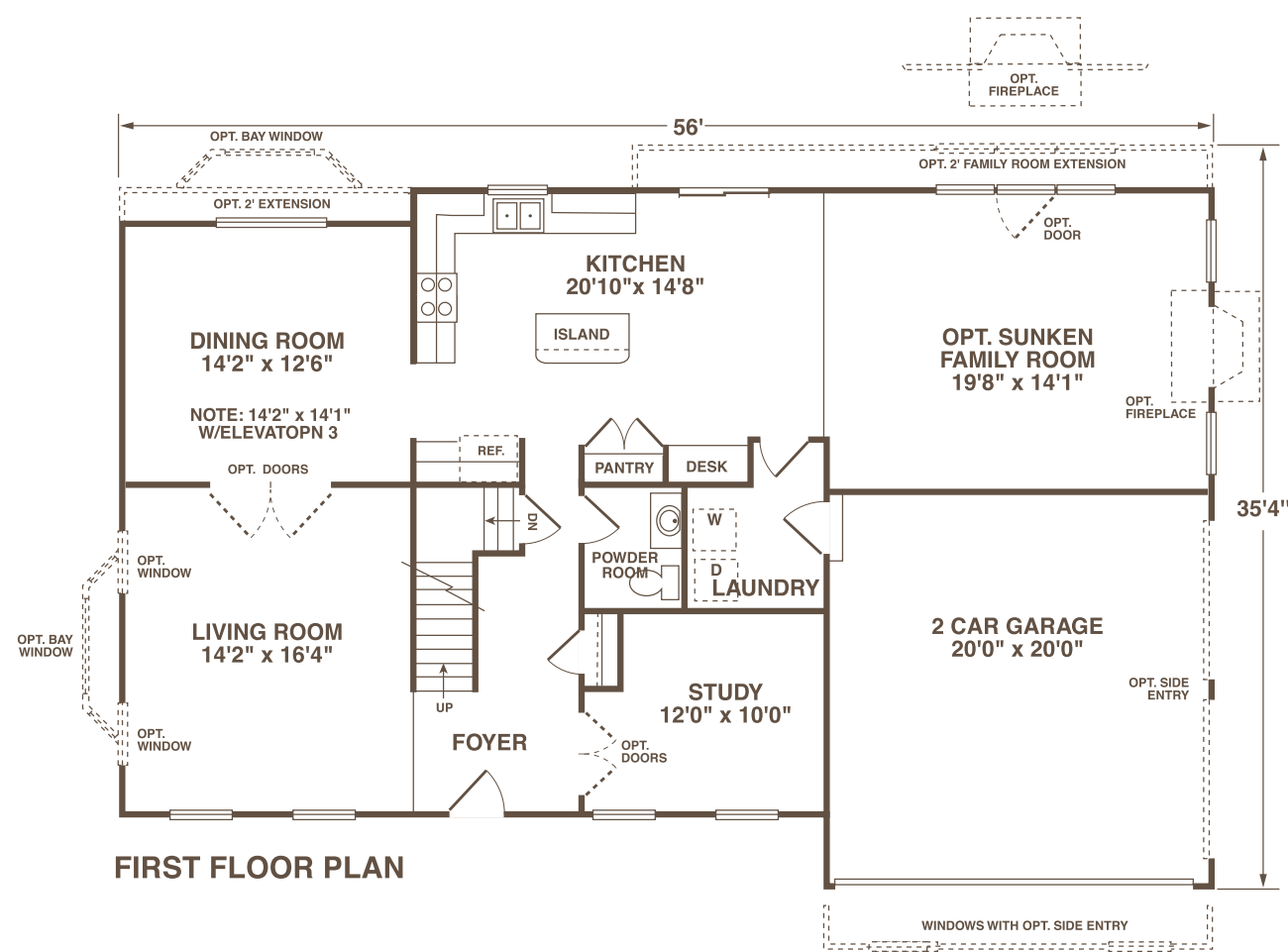
Elevation D

Premier Series



Elevation A

The Beechwood



All floorplans are approximate and subject to change. Shown with options.

MHIC #3272



The Beechwood

There's an art to building a home. Bill and Todd Utz believe the art is practiced best by focusing on the needs and interests of the homebuyer. Is the location right for you? Does the design of your home reflect your lifestyle and personality? Are you impressed with the way your home is constructed, with high quality materials, and a craftsmanship marked by superb attention to detail? UTZ homebuyers are on record for saying "yes." In fact, customers are so happy with their homebuying experience, they end up asking UTZ to build a second, and even a third home for them. For over 25 years, UTZ has been customer-focused on the homebuilding experience to meet the expectations you have for your new home.